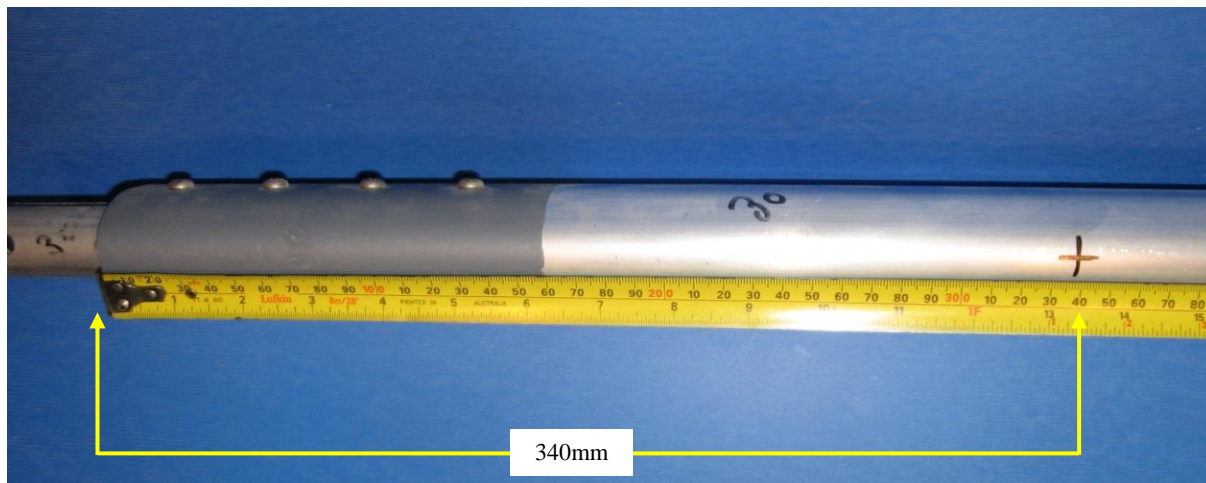


## *Pre-Paint>Wings>Fit pitot tube to strut*

### **Objectives of this task:**

To fit the Pitot head and tube to the right-hand strut prior to painting.

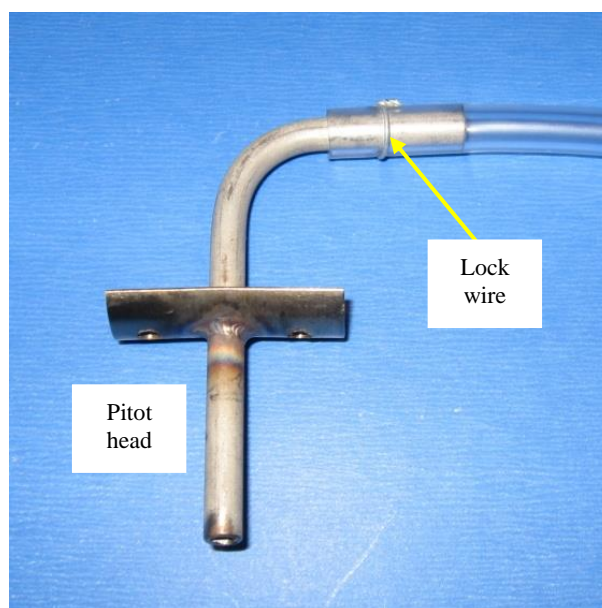


Take the right hand strut and measure down 340mm from the upper/wing end of the airfoil-shaped section, mark and drill a 10mm hole in the front of the strut.

Feed the supplied 1/4" ID plastic tubing into the hole and down the strut until it can be seen at the bottom, then fit the top end of the tube over the pitot fitting and superglue and lock wire the tube in place as shown at right. Feed all the tube into the strut until the pitot head mounting plate sits against the strut then pop rivet the plate in place as shown in the photo below.

Refer the drawing on the next page for details.

Tie the excess plastic tube to the outside of the strut and set the strut aside for test fitting and painting.



THIS DRAWING IS COPYRIGHT AND MUST NOT BE COPIED WITHOUT CONSENT OF AVTECH PTY LTD		DIMENSIONS IN MILLIMETRES		DO NOT SCALE	PROJECTION												
2000093	WING STRUT ASSY	2A107A0D	WING STRUT ASSY UL MKIII EXTRUSION		<table border="1" style="float: right; margin-top: 10px;"> <tr><td>6</td><td>260810</td></tr> <tr><td>5</td><td>26/10/05</td></tr> <tr><td>4</td><td>19/02/04</td></tr> <tr><td>3</td><td>000107</td></tr> <tr><td>2</td><td>060993</td></tr> <tr><td>1</td><td>280991</td></tr> </table>	6	260810	5	26/10/05	4	19/02/04	3	000107	2	060993	1	280991
6	260810																
5	26/10/05																
4	19/02/04																
3	000107																
2	060993																
1	280991																
2041073	WING STRUT ASSY LONG WINGS	2A108A0D	WING STRUT ASSY J120 LSA SK MKIII EXTRUSION														
2105023	STREAMLINED WING STRUT ASSY	9023093	WING STRUT ASSY														
2133023	STREAMLINED WING STRUT ASSY SHORT																
2134023	STREAMLINED WING STRUT ASSY LONG																
2141023	STREAMLINED WING STRUT J SERIES																
2A002A0D	STREAMLINED WING STRUT SHORT REC NUTS																
2A003A0D	STREAMLINED WING STRUT LONG REC NUTS																
2A004A0D	STREAMLINED WING STRUT ASSY J2/400																
2A030A0D	WING STRUT ASSY J160																
2A034A0D	WING STRUT ASSY J160 WITH UL WING																
2A101A0D	WING STRUT ASSY J160 MKIII EXTRUSION																
2A106A0D	WING STRUT ASSY J170-UL MKIII EXTRUSION																

ITEM	PART No.	DESCRIPTION	QTY.
10	5044494	PITOT MOUNT w/A	1
9	504439N	TUBE BENT PITOT	1
8	????	HOSE CLAMP *MS8242	2
7	504439N	HOSE COUPLING	1
6	PV0029N	PVC TUBE 1/4" ID	1
5	PI0139N	WIRE TIE	1
4	PH0029N	RIVET	2
3	504429N	MOUNT PLATE PITOT TUBE	1
2	504419N	TUBE STRAIGHT PITOT	1
1	SEE NOTE	WING STRUT ASSY	1

LIMITS	+/-	1	DRAWN	JW
MATERIAL	AS DETAILED			

TITLE		DWG. NO.	
PITOT ASSY - OMNIBUS DRAWING		9024094-7	
AVTECH P/L A.C.N. 010 786 973 HINKLER AIRPORT BUNDABERG		SHEET 1 OF 1	

This completes the Pre-Paint>Wings>Fit pitot tube to strut task.