



**CIRCUIT DIAGRAM KEY**

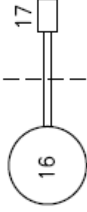
1. BATTERY
2. STARTER
3. STARTER SOLENOID
4. STATER BUTTON PI0306N
5. ON/OFF TOGGLE SWITCH (PI0316N)
6. ETC SWITCH
7. FLAP SWITCH (3A062A0D)
8. CIRCUIT BREAKER 15A
9. CIRCUIT BREAKER 10A
10. CIRCUIT BREAKER 5A
11. FUSE 1.5A
12. ELECTROLYTIC CAPACITOR PI3A053A0N
13. OIL PRESSURE SENDER
14. 60A BLADE FUSE HOLDER, PI3A056A0N
14. 40A STD BLADE FUSE PI3A057A0N
15. OIL TEMPERATURE SENDER
16. N.O. RELAY 40ADC PI3A054A0D

**17. CYLINDER HEAD TEMPERATURE SENSOR**

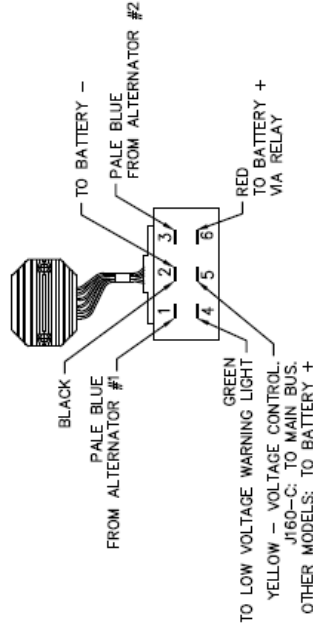
18. OVERVOLTAGE MODULE PI3A055A0N
19. TACHOMETER MAGNETIC SENSOR
20. #
21. #
22. ALTERNATOR REGULATOR
23. FLAP MOTOR
24. #
25. WARNING LIGHT GREEN (PI3A005A0N)
26. WARNING LIGHT RED (PI3A004A0N)
27. FUEL PRESSURE SWITCH
28. #
29. #
30. #
31. #
32. #
33. #

**34. STROBE CONNECTION POINT**

35. NOISE FILTER (PI4A005N)
36. #
37. RF SUPPRESSOR LARGE (PI4A006N)
38. RF SUPPRESSOR SMALL (PI4A007N)
39. #
40. #
41. HEADER TANK LEVEL SENSOR - OPTION (PW4A01N)
42. - SPARE -
43. VOLTAGE REDUCTION RESISTOR (PI3A014A0N)
44. TEST SWITCH (PI0092N)
45. WARNING L.E.D.(PI3A004A0N)



CYLINDER HEAD TEMPERATURE GAUGE WIRING



- NOTES:
1. WIRING MIL SPEC M 22759/16-16-9 UNLESS SHOWN OTHER
  2. STARTER CABLE (SC) 16mm SQ X-SECTIONAL AREA SOFT LAV
  3. WIRING & SENSORS SUPPLIED BY MANUFACTURER AS PART OF INSTRUMENT
  4. RADIO WIRING TO MANUFACTURER'S SPEC.
  5. XPNDR WIRING TO MANUFACTURER'S SPEC.
  6. INSTRUMENTS DETAILED IN AIRCRAFT BUILD SHEET
  7. WIRE EMS & EFIS TO MANUFACTURER'S INSTRUCTIONS.
  8. FOR NIGHT VFR LIGHTING WIRING SEE DRAWING 4A264C0D.
  9. EARTH EMS DIRECT TO FIREWALL EARTH TAG (WHERE EQUIPPED)
  10. STROBE WIRING:
    - LOOP POWER SUPPLY TO STROBE 3 TIMES THROUGH FERRITE AS SHOWN.
    - FIT STROBE BOX FORWARD OF FIREWALL
    - USE SHIELDED WIRE FOR STROBES. ENSURE SHIELD IS CONTINUOUS BETWEEN BOX AND STROBE.
    - EARTH STROBE BOX AND STROBE CABLE SHIELD AS SHOWN
  11. CS-VLA MODELS USE FIREPROOF FITTING P/No. 1A071A0D. FOR ALL WIRE RUNS THROUGH FIREWALL.
  12. "FIREWALL" EARTHS CONNECT TO THE MAIN EARTH TAG BOLTED TO THE FIREWALL
  13. UNLESS SHOWN OTHERWISE 1 WIRE GAUGE USED FOR EACH CIRCUIT

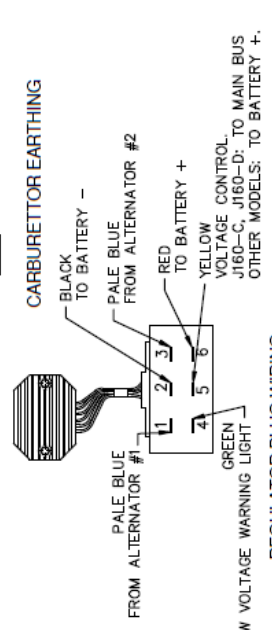
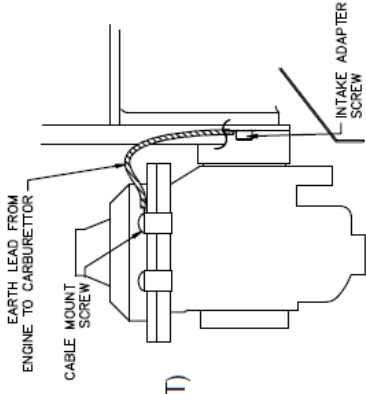
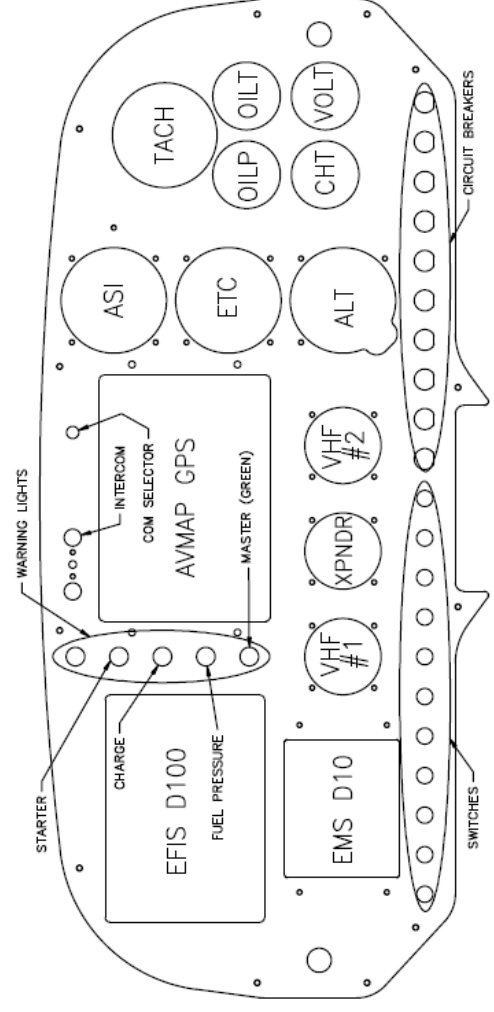
DS	5	19/08/11
DS	4	3/8/10
DS	3	17/3/10
DM	2	24/1/2006
SCALE	NTS	
ISS.	1	14/9/05
DATE		

LIMITS	N/A	DRAWN	DM	TITLE	DWG. NO.
MATERIAL	N/A	APPR.		AVTECH P/L HINKLER AIRPORT BUNDABERG	4A264A0D-5
				ELECTRICAL WIRING DIAGRAM	SHEET 2 OF 2



**CIRCUIT DIAGRAM KEY**

- 1. BATTERY
- 2. STARTER
- 3. STARTER SOLENOID
- 4. STARTER BUTTON PI0306N
- 5. ON/OFF TOGGLE SWITCH (PI0316N)
- 6. ETC SWITCH
- 7. FLAP SWITCH (3A062A0D)
- 8. TOGGLE SWITCH SPDT LANDING LIGHTS (PI3A028A0N)
- 9. CIRCUIT BREAKER 10A
- 10. CIRCUIT BREAKER 5A
- 11. CIRCUIT BREAKER 1A
- 12. INSTRUMENT LIGHTS
- 13. MAP READING LIGHTS
- 14. INTERIOR LIGHT
- 15. LANDING LIGHT
- 16. OIL PRESSURE SENDER
- 17. VARIABLE RESISTOR SWITCHED 1M OHM (PI5A004N)
- 18. VARIABLE RESISTOR 100 OHM
- 19. VARIABLE RESISTOR 5K OHM
- 20. CONNECTION - EMS TO ALT (TACH)
- 21. FUEL PUMP
- 22. ALTERNATOR REGULATOR
- 23. FLAP MOTOR
- 24. AUX POWER SOCKET
- 25. WARNING LIGHT GREEN (PI3A005A0N)
- 26. WARNING LIGHT RED (PI3A004A0N)
- 27. FUEL PRESSURE SWITCH
- 28. VHF RADIO 1
- 29. VHF RADIO 2 (OPTION)
- 30. INTERCOM
- 31. ELECTRIC TURN COORDINATOR
- 32. TRANSPONDER (OPTION)
- 33. GPS (OPTION)
- 34. STROBE CONNECTION POINT
- 35. NOISE FILTER (PI4A005N)
- 36. DYNON D-100 EFIS
- 37. RF SUPPRESSOR LARGE (PI4A006N)
- 38. RF SUPPRESSOR SMALL (PI4A007N)
- 39. 1.5A INLINE FUSE
- 40. FUEL FLOW METER
- 41. EGT
- 42. FUEL PRESSURE
- 43. VOLTS
- 44. EMS-D10
- 45. FUEL LEVEL SENSOR (OPT)
- 46. 30A FUSE
- 47. 30K OHM RESISTOR



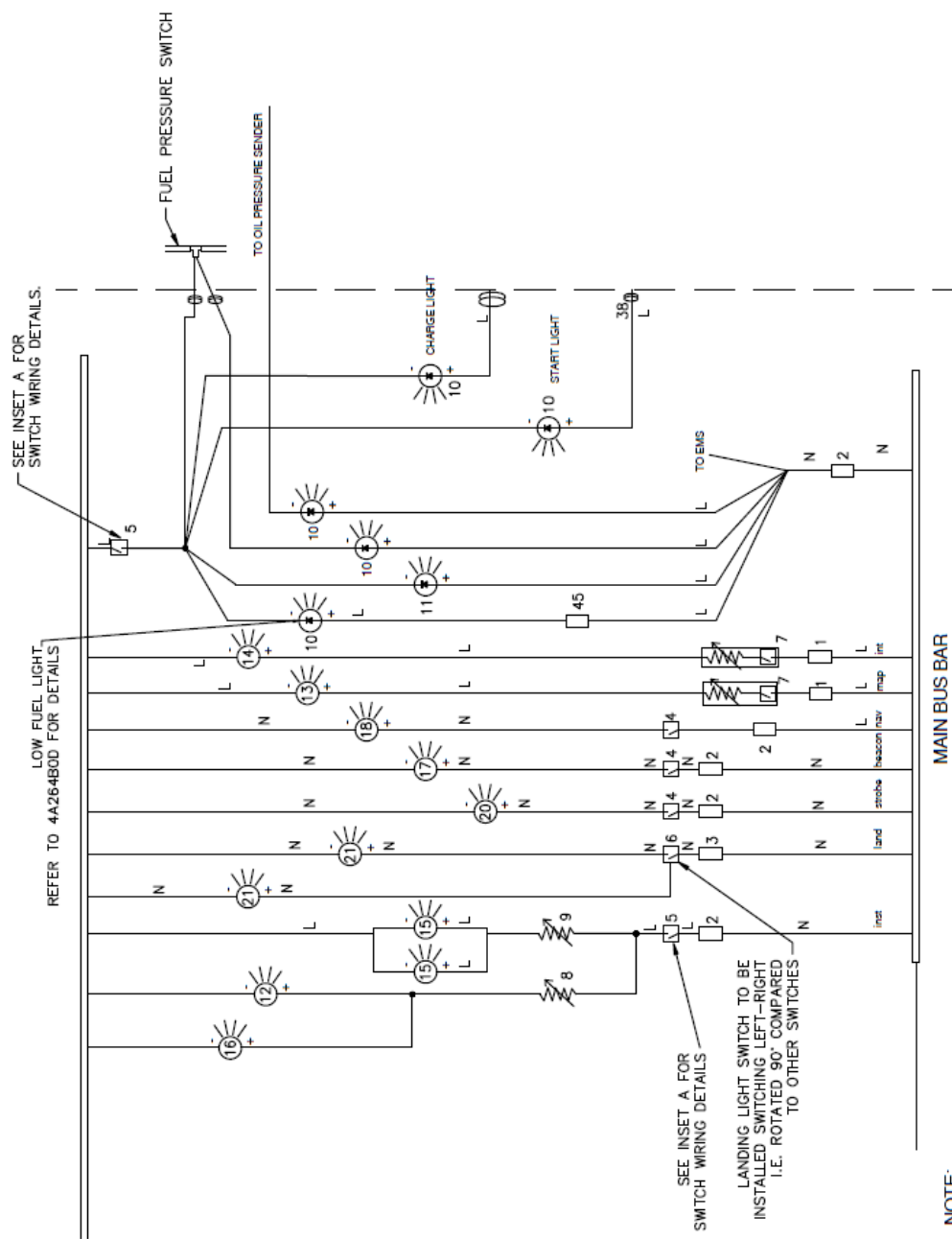
DS	5	3/8/10
DS	4	19/3/10
DS	3	13/6/08
DS	2	7/5/07
SCALE		NTS
ISS.	1	18/1/06
DATE		

LIMITS	N/A	DRAWN	DS
MATERIAL	N/A	APPR.	
TITLE		AVTECH P/L	
HINKLER AIRPORT		BUNDBERG	
J160 CERTIFIED GLASS COCKPIT		VARIANT WIRING DIAGRAM	
DWG. NO.		4A264B0D-5	
SHEET 2 OF 2			

### CIRCUIT DIAGRAM KEY

1. 1 AMP CIRCUIT BREAKER
2. 5 AMP CIRCUIT BREAKER
3. 10 AMP CIRCUIT BREAKER
4. ON/OFF TOGGLE SWITCH SPST STANDARD (PIO316N)
5. TOGGLE SWITCH WIRED FOR INST LIGHTS (SEE INSET A)
6. TOGGLE SWITCH SPDT LANDING LIGHTS (PI3A028A0N)
7. VARIABLE RESISTOR SWITCHED 1M OHM (PI5A004N)
8. VARIABLE RESISTOR 100 OHM
9. VARIABLE RESISTOR 5K OHM
10. LED WARNING LIGHT RED
11. LED WARNING LIGHT GREEN
12. BEZEL LIGHTS
13. MAP READING LIGHTS
14. INTERIOR LIGHT
15. LED INSTRUMENT STRIP FLOOD LIGHT
16. COMPASS LIGHT
17. RED BEACON
18. POSITION LIGHTS
19. STROBE LIGHT DRIVER
20. STROBE LIGHT
21. LANDING LIGHT

**WIRE TYPE**  
**N - 16 GAUGE AIRCRAFT WIRE**  
**L - 22 GAUGE AIRCRAFT WIRE.**



**NOTE:**

1. HEAT SHRINK SOLDERED CONNECTIONS WHERE POSSIBLE
2. WIRES TO INSTRUMENT PANEL FLOOD LIGHT NEEDS TO BE REPLACED WITH AIRCRAFT GRADE WIRE.
3. DIMMERS NEED GET BRIGHTER WITH CLOCKWISE ROTATION.

DM	3	7/9/10
DS	2	3/8/10
SCALE	NTS	
ISS.	1	31/5/07
DATE		

DWG. NO.  
4A264C00-3

TITLE  
NIGHT VFR LIGHT WIRING

AVTECH P/L  
HINKLER AIRPORT  
BUNDABERG

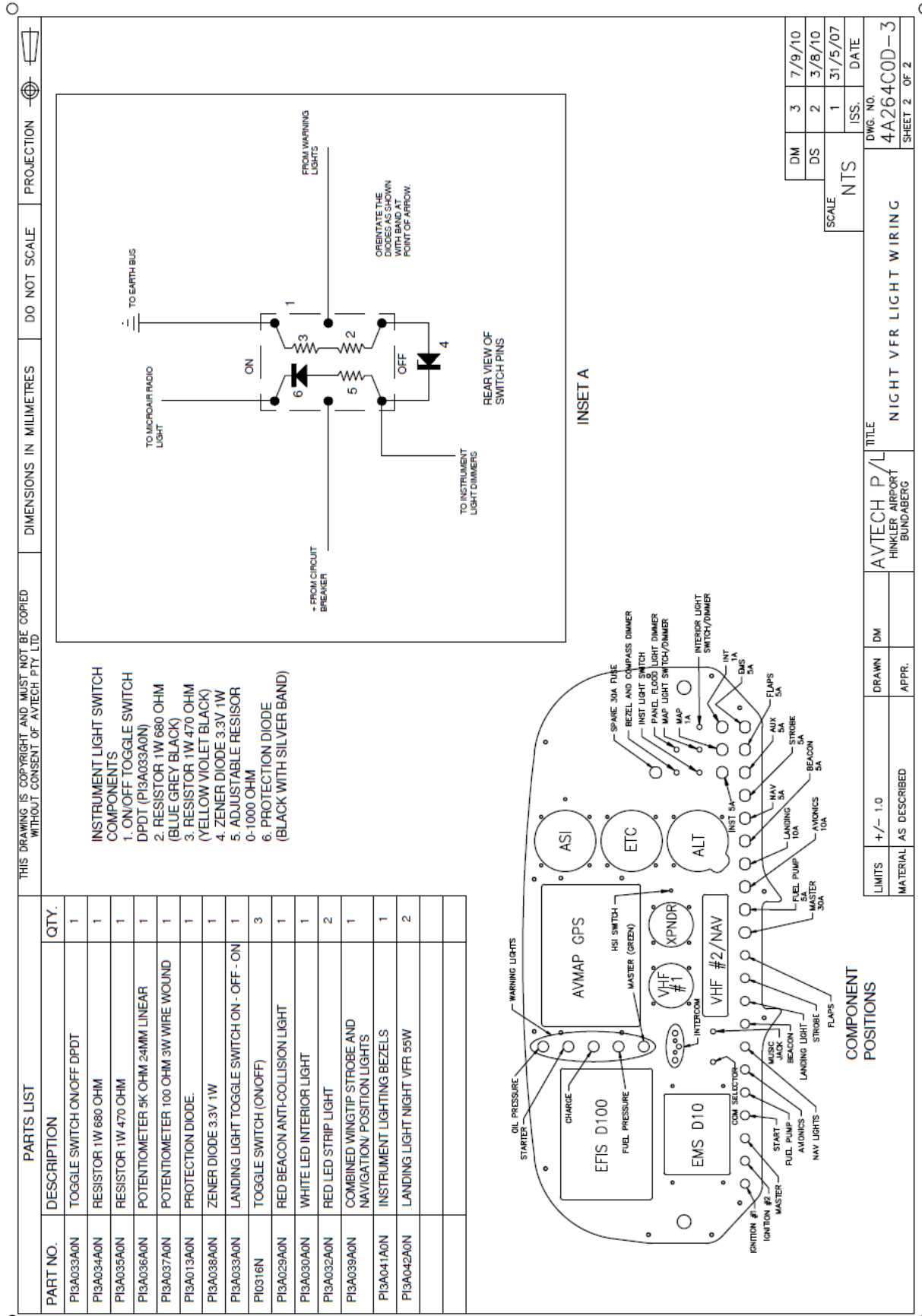
DRAWN DM

LIMITS N/A

MATERIAL AS DESCRIBED

APPR.

SHEET 1 OF 2



DM	3	7/9/10
DS	2	3/8/10
ISS.	1	31/5/07
DATE		

SCALE	NTS
DWG. NO.	4A264C0D-3
SHEET 2 OF 2	

AVTECH P/L	TITLE
HINKLER AIRPORT BUNDEBERG	NIGHT VFR LIGHT WIRING

LIMITS	+/- 1.0	DRAWN	DM
MATERIAL	AS DESCRIBED	APPR.	

This completes the *Post-Paint>Fuselage>Electrical wiring diagrams* task.